



# Zeomineral *Magma*

Liquid food supplement containing astaxanthin and spirulina-enriched bio beetroot juice and blue grape concentrate

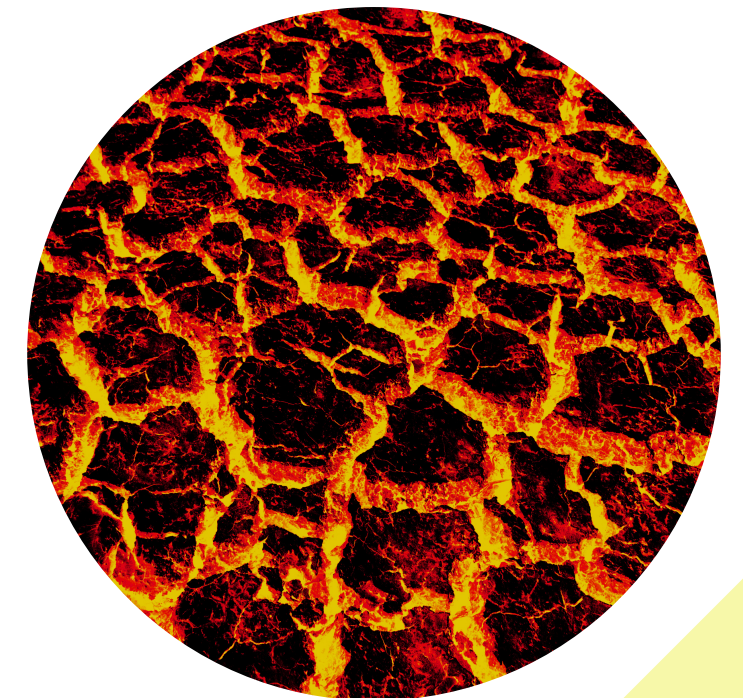
The content of organic beetroot juice and blue grape juice is a natural source of iron, without which there is no oxygen uptake in the lungs, the transport of oxygen in the body and oxidation in the cells is blocked. Only a maximum of 2-8% of the iron ingested in synthetic or mono (equivalent form) is utilized in the body, while the rest is unprocessed and strains the kidneys or other tissues and can cause constipation. That is why we are looking for a natural source of iron.

It is rich in (bio) flavonoids with antioxidant effects, which can provide protection against serious diseases by neutralizing free radicals.

Spirulina and Astaxanthin algae strengthen the antioxidant properties of the product. It does not contain added sugar.

Daily dose: 2x20g alone or mixed with liquid.

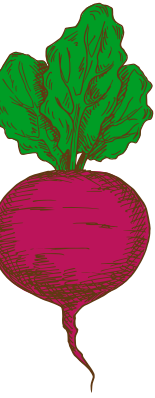
Packaging: 560g net





# Zeomineral *Magma*

Liquid food supplement containing astaxanthin and spirulina-enriched bio beetroot juice and blue grape concentrate



## Ingredients:

Organic beetroot juice: Its natural, organic iron content prevents and corrects the deficiency. It helps the formation and function of red blood cells, it plays an important role in the supply of blood oxygen.

Aloe vera extract: Accelerates and normalizes metabolism, regenerates intestinal villi, cleanses the absorbent surface.

Blue grape concentrate: Also high in iron. It supports blood cell formation, normal blood circulation. Its beneficial ingredients include resveratrol and polyphenol.

Quince concentrate: Strengthens the immune system and has a beneficial effect on anaemia as it contains many vitamins, pectin and tannin. Rich in vitamins A, B1, B2, B6, C, E and P, as well as minerals (iron, calcium, potassium, phosphorus, magnesium). The content of vitamin P (citric content) is also unique, which can prevent or help heal scurvy and regulate cholesterol levels.

Peach concentrate: A natural source of magnesium, calcium, selenium and zinc.

Spirulina algae: its chlorophyll and vitamin B12 content is outstanding.

Haematococcus pluvialis algae: The active ingredient is Astaxanthin, which is the strongest antioxidant.



# Zeomineral *Lava*

# vs

# Zeomineral *Magma*



L  
a  
v  
a



Aloe vera extract



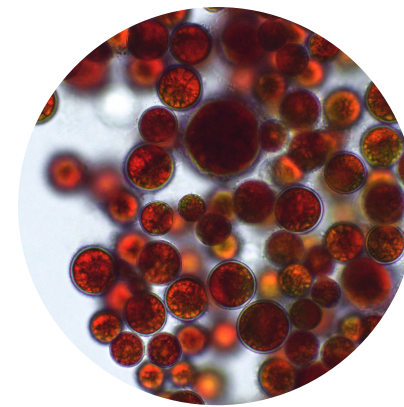
Quince concentrate



Peach concentrate



Spirulina algae



Haematococcus pluvialis algae



Sea buckthorn marrow

M  
a  
g  
m  
a



Aloe vera extract



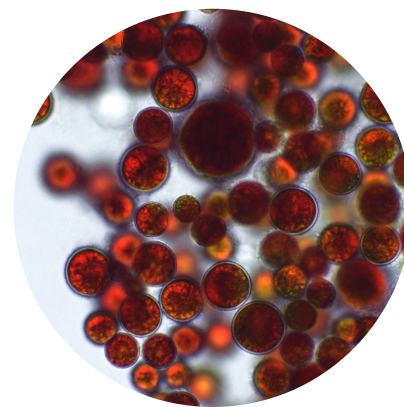
Quince concentrate



Peach concentrate



Spirulina algae



Haematococcus pluvialis algae



Blue grape concentrate



Bio beetroot juice